



# EMTONE<sup>®</sup>

Touch the future of  
cellulite reduction





sales@btlnet.com  
emtone.com

In the EU: EMTONE is intended for treatment of obesity and localized obesity by fat reduction, skin laxity treatment, skin regeneration, treatment of gynoid lipodystrophy, alleviation of pain and alleviation of muscle spasms.

©2019 BTL Group of Companies. All rights reserved. BTL® and EMTONE® is registered trademark in the United States of America, the European Union, and other countries. The products, the methods of manufacture or the use may be subject to one or more U.S. or foreign patents or pending applications. Trademarks EMSculpT®, EMSELLA®, EMTONE®, EMBODY®, and HIFEM® are parts of EM™ Family of products.

This material is not intended for US customers.

Do you want to treat patients who:

Are suffering from soft or hard **CELLULITE & LOOSE SKIN?**

Are tired of undergoing ineffective procedures?

Want to see **immediate** results with **no downtime?**

# EMTONE'EM

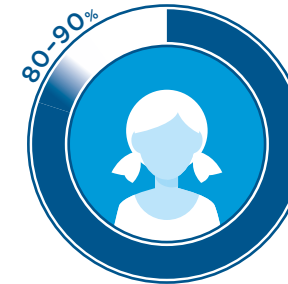
EMTONE®

# A NON-INVASIVE SOLUTION FOR

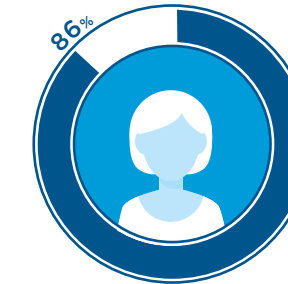


- ✓ All grades of hard & soft cellulite
- ✓ Loose textured skin
- ✓ All skin types
- ✓ All body types (no BMI limitation)

# THE MOST COMMON ISSUES



80-90% of post-pubertal women have some form of cellulite\*



86% of women after their first childbirth have a problem with loose abdominal skin\*\*



After the age of 20, 1% less of collagen is produced in the dermis each year and skin thickness is decreased roughly 7% every 10 years\*\*\*



Almost 10 times more non-invasive than surgical procedures were performed in 2017\*\*\*\*



\*LUEBBERDING, Stefanie, Nils KRUEGER a Neil S. SADICK. Cellulite: An Evidence-Based Review. American Journal of Clinical Dermatology[online]. 2015, 16(4), 243-256 [cit. 2017-11-29]. DOI: 10.1007/s40257-015-0129-5. ISSN 1175-0561. \*\*CRAWFORD, Leslie a Sierra SENYAK. The new-mom body survey: 7,000 women tell it like it is. Baby center [online]. [cit. 2018-02-12]. Source page: www.babycenter.com. \*\*\*OBAGI, S. Why Does Skin Wrinkle with Age? What Is the Best Way to Slow or Prevent This Process? Scientific American [online]. [cit. 2018-02-12]. Source page: www.scientificamerican.com. ROBERT, L. a T. FULOP. Aging: Facts and Theories. Switzerland: Karger Publishers, 2014. ISBN 978-3-318-02652-8. \*\*\*\*AMERICAN SOCIETY OF PLASTIC SURGEONS, 2018.

# 5 GOOD REASONS FOR EMTONE

THE ONLY ONE  
DEVICE THAT TREATS  
ALL 5 CAUSES  
OF CELLULITE  
& LOOSE SKIN

- 1 Diminished fat chambers
- 2 Collagen remodeling
- 3 Restored skin elasticity
- 4 Blood flow enhancement
- 5 Increase in metabolic waste removal

# TWO ENERGIES IN A SINGLE APPLICATOR

Simultaneous delivery of thermal and mechanical energy via Monopolar Radiofrequency and Targeted Pressure Energy.

- The one and only non-invasive device eliminating all main causes of cellulite and loose skin.
- Synergistic emission leads into halving the treatment time while enhancing the impact on connective tissue.



ALL 5 CAUSES  
OF CELLULITE &  
LOOSE SKIN



THERMAL &  
MECHANICAL  
ENERGY



IMMEDIATE  
& LASTING  
RESULTS





# SPECIALLY DESIGNED

## BEFORE

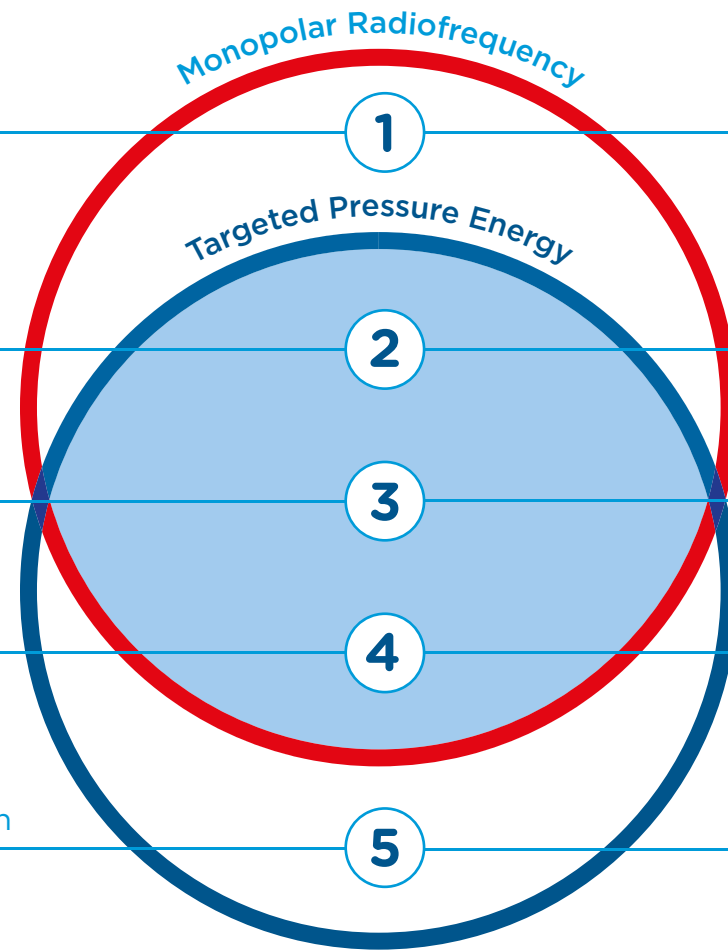
Enlarged fat chambers

Damaged collagen fibers

Loss of skin elasticity

Poor blood flow

Metabolic waste accumulation



## AFTER

Diminished fat chambers

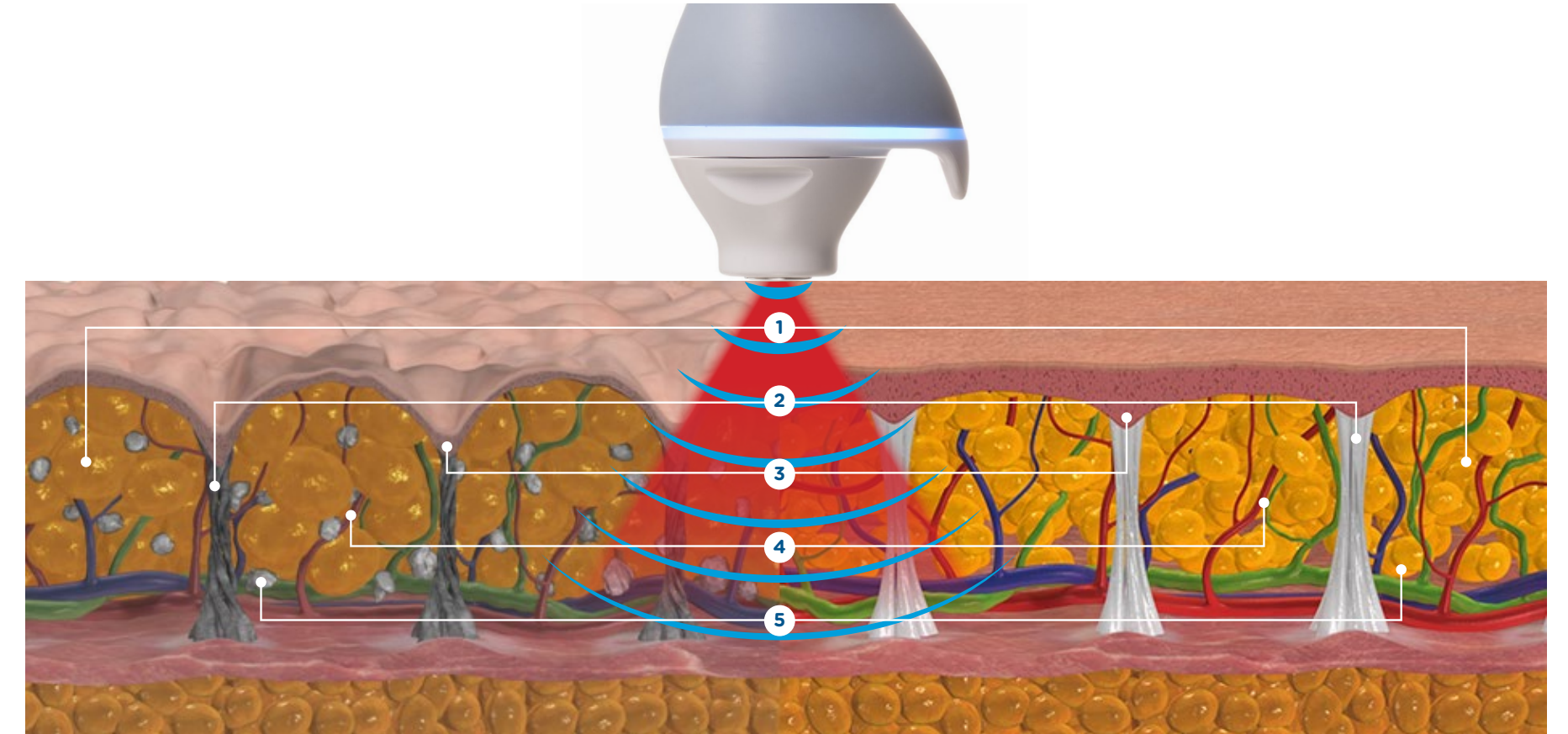
Collagen remodeling

Restored skin elasticity

Blood flow enhancement

Increase in metabolic waste removal

# TO TONE THE SKIN



Before | After

## CELLULITE REDUCTION ON THIGHS AND BUTTOCKS

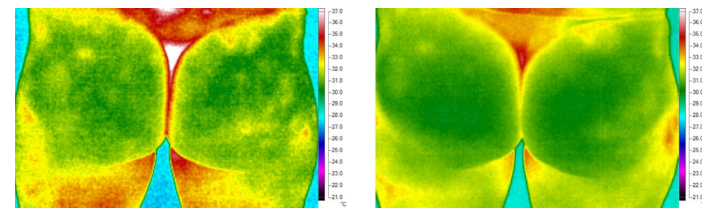
CLINICAL EVALUATION OF SIMULTANEOUSLY APPLIED MONOPOLAR RADIOFREQUENCY AND TARGETED PRESSURE ENERGY AS A NEW METHOD FOR NON-INVASIVE TREATMENT OF CELLULITE IN POST-PUBERTAL WOMEN.

Prof. Klaus Fritz M.D.<sup>1</sup>, Prof. Carmen Salavastru, M.D.<sup>2</sup>,  
Magdalena Gyurova M.D.<sup>3</sup>

1. Dermatology and Laser Center, Landau in der Pfalz, DE; 2. Department of Dermatology, Colentina Clinical Hospital, Bucharest, RO; 3. Dermaplus Dermatology Laser & Aesthetic Medical Clinic, Plovdiv, BG

### HIGHLIGHTS

- **30 women** with bilateral thigh and buttock cellulite received 4 treatments. Results were evaluated at 3 month follow-up.
- **93% of patients** showed a visible reduction of cellulite.
- **2.2 cm reduction** in thigh circumference.
- **97% satisfaction** with treatment results.
- **Ultrasonography** showed increased skin thickness, reduced layer of fat chambers and smoother boundary between dermis and hypodermis.
- **Thermography** proved increased homogeneity of blood supply.



Ultrasonography and thermography images before (left) and 3 months after 4th treatment (right).

1. FRITZ, Klaus; SALAVASTRU, Carmen; GYUROVA, Magdalena. Clinical evaluation of simultaneously applied monopolar radiofrequency and targeted pressure energy as a new method for non-invasive treatment of cellulite in post-pubertal women. JCD. 2018 Jun;17(3):361-364.

## ABDOMINAL SKIN LAXITY TREATMENT IN WOMEN POST VAGINAL DELIVERY

REDUCTION OF ABDOMINAL SKIN LAXITY IN WOMEN POST VAGINAL DELIVERY USING THE SYNERGISTIC EMISSION OF RADIOFREQUENCY AND TARGETED PRESSURE ENERGIES.

Prof. Klaus Fritz M.D.<sup>1</sup>, Prof. Carmen Salavastru, M.D.<sup>2</sup>,  
Magdalena Gyurova M.D.<sup>3</sup>

1. Dermatology and Laser Center, Landau in der Pfalz, DE; 2. Department of Dermatology, Colentina Clinical Hospital, Bucharest, RO; 3. Dermaplus Dermatology Laser & Aesthetic Medical Clinic, Plovdiv, BG

### HIGHLIGHTS

- **22 women** after delivery with abdominal skin laxity received 4 treatments. Results were evaluated at 3 month follow-up.
- In **90.9%** of patients **improvement of viscoelasticity** was observed.
- **Skin elasticity** was visibly improved in **86%** of patients.
- **1.43 cm reduction** in abdominal circumference.
- **90% satisfaction** with treatment results.



Patient images before (left) and 3 months after 4th treatment (right).

2. FRITZ, Klaus; SALAVASTRU, Carmen; GYUROVA, Magdalena. Reduction of abdominal skin laxity in women post vaginal delivery using the synergistic emission of radiofrequency and targeted pressure energies. JCD. 2018 Oct;17(5):766-769.

## HISTOLOGICAL STUDY: SIMULTANEOUS VS. CONSECUTIVE APPLICATION

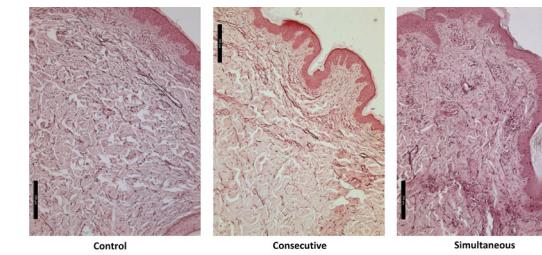
HISTOLOGICAL EXAMINATION OF SKIN TISSUE IN THE PORCINE ANIMAL MODEL AFTER SIMULTANEOUS AND CONSECUTIVE APPLICATION OF MONOPOLAR RADIOFREQUENCY AND TARGETED PRESSURE ENERGY

Brian Kinney M.D.<sup>1</sup>, Penka Yonkova, M.D.<sup>2</sup>, Kanakov Dian M.D.<sup>3</sup>

1. Plastic Surgery Excellence, Beverly Hills CA, USA;  
2. Department of Veterinary Anatomy, Histology, and Embryology, Trakia University, BG  
3. Department of Internal Noninfectious Diseases, Trakia University, BG

### HIGHLIGHTS

- **Two-arm study:**
  - 1 arm treated by **simultaneous emission** of RF and TPE.
  - 1 arm treated **consecutively** (TPE after RF).
- **Simultaneous application** produced more profound changes than consecutive application:
  - By **59%** and **64%** higher increase in **collagen** and **elastin** fibers at 1-month follow-up.
  - By **44%** higher increase in the **thickness of dermis** at 1-month follow-up.
- **Both applications** showed similar level of:
  - **Reduced size of adipocytes.**
  - **Enhanced blood supply.**



Histological samples treated consecutively (left) and simultaneously (right) at 1 month follow-up.

3. KINNEY, Brian; KANAKOV, Dian; YONKOVA, Penka. Histological examination of skin tissue in the porcine animal model after simultaneous and consecutive application of monopolar radiofrequency and targeted pressure energy. JCD. 2019;00:1-9

**Simultaneous emission** leads to significantly higher impact on **connective tissue** than consecutive application of both energies.

**59%** Higher increase in collagen<sup>3</sup>

**64%** Higher increase in elastin<sup>3</sup>

**44%** Higher increase in thickness of dermis<sup>3</sup>

# INTELLIGENT PERFORMANCE

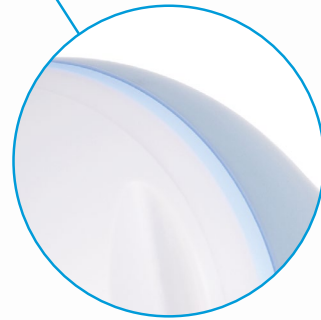
**1 SMART TOUCH**  
stops the flow of both energies once the skin contact is interrupted.



**2 REAL-TIME TEMPERATURE MONITORING**  
provides optimal tissue heating.



**3 AUDIO AND VISUAL CONTACT CONTROL SYSTEM**  
maximizes the level of both patient and operator comfort.



**4 INTUITIVE TOUCH SCREEN**  
allows to adjust the settings right on the applicator's display.



**5 IMPEDANCE INTELLIGENCE**  
constantly monitors the skin impedance changes during the treatment.

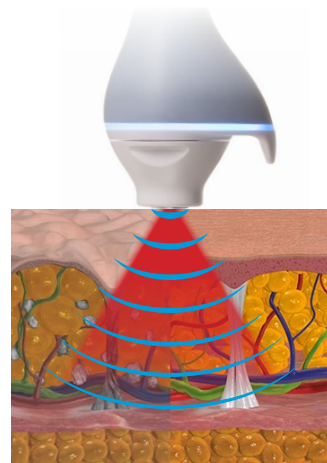




# WHY PHYSICIANS SAY YES TO

## ALL CAUSES OF CELLULITE & LOOSE SKIN

All 5 causes of cellulite and loose skin can be treated non-invasively.



## ALL SKIN & BODY TYPES

No BMI or skin type restrictions.



## ALL GRADES OF SOFT & HARD CELLULITE

Due to **strong mechanical & thermal energy**, all grades and both types of cellulite can be treated effectively.



# EMTONE

## UNIQUE TECHNOLOGY

Simultaneous delivery of **Monopolar Radiofrequency** and **Targeted Pressure Energy** via single applicator.



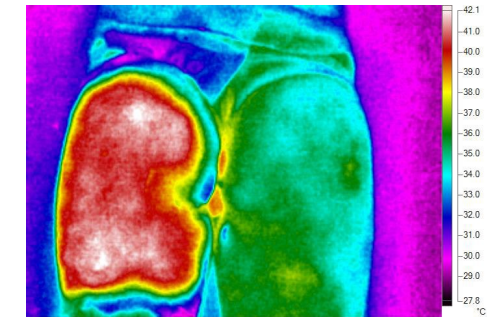
## SHORTER TREATMENT & BETTER RESULTS

Synergistic emission leads into **halving the treatment time** while **enhancing the impact on connective tissue**.



## EFFICIENTLY & NON-INVASIVELY

Unlike weak cellulite massagers and surgical approaches, **EMTONE** treats **non-invasively** and **effectively** in **only 4 treatment sessions**.



Thermal picture of homogeneously heated skin during the therapy.



# TONED NOT TEXTURED

BEFORE



AFTER EMTONE



AFTER 3<sup>rd</sup> TREATMENT, COURTESY OF: MARC SALZMAN, M.D.

BEFORE



AFTER EMTONE



AFTER 4<sup>th</sup> TREATMENT, COURTESY OF: TANIA RASHID

BEFORE



COURTESY OF: GIULIA BIANCHI, M.D.

# WITH NO DOWNTIME

AFTER EMTONE



AFTER 3<sup>rd</sup> TREATMENT

BEFORE



AFTER EMTONE



AFTER 4<sup>th</sup> TREATMENT, COURTESY OF: KLAUS FRITZ, M.D.

BEFORE



AFTER EMTONE



AFTER 4<sup>th</sup> TREATMENT, COURTESY OF: BTL AESTHETICS

---

# LISTEN TO YOUR PEERS

---



**Brian M. Kinney, M.D., FACS**  
Plastic Surgery Excellence  
Beverly Hills, CA

“A major innovation for this device is the unique combination in one unit of radiofrequency and targeted pressure wave therapy, producing synergistic mechanisms of action. This saves time and improves the efficiency of the treatment.”



**Suneel Chilukuri, M.D., FAAD, FACMS**  
Refresh Dermatology  
Houston, TX

“BTL’s Emtone allows us to consistently heat the skin to 40-45 degrees °C in half the normal treatment time while maintaining patient comfort. As a result, we are able to achieve results that were only attainable with surgery in the past with absolutely NO downtime.”



**Melanie Palm, M.D., MBA**  
Art of Skin  
Solana Beach, CA

“I think patients do have the opinion that there’s just not a really effective cellulite treatment out there and I really want to change the conversation that I am having with cellulite patients so that they do have hope and they do think that there is something out there that doesn’t hurt and that’s effective.”



**Rita Rakus, M.D., MBBS, FBCAM**  
DR RITA RAKUS  
London, UK

“We have had every cellulite machine you can imagine and all of them now are gathering dust. Because EMTONE will cure cellulite and all the 5 different causes I am very confident to treat my patients with that in every area. I know we gonna get the results.”

