

# BTL EMSELLA®





[sales@btl.net](mailto:sales@btl.net)  
[www.emsella.com](http://www.emsella.com)

©2018 BTL Group of Companies. All rights reserved. BTL®, EMSELLA® and HIFEM® are registered trademarks in the United States of America, the European Union and/or other countries. The products, the methods of manufacture or the use may be subject to one or more U.S. or foreign patents or pending applications.

**SAY NO TO INTIMATE  
DISCOMFORT**

# PELVIC FLOOR MATTERS

Whether it's a result of body aging, childbirth or menopause, pelvic floor matters to every woman.



## REALITY

The worldwide prevalence of female sexual dysfunction is up to 63%.\* Incontinence affects 200 million people worldwide.\*



## INTIMACY

Weak pelvic floor muscles provide insufficient activity necessary for vaginal friction and inhibit orgasmic potential.\*



## SELF-CONFIDENCE

According to the NAFC, women with undiagnosed incontinence report loss of self-confidence in 54% of cases and loss of intimacy in 45% of cases.\*

# BE HIGHLY FOCUSED

A breakthrough HIFEM®\* technology represents a new category of non-invasive treatment for urinary incontinence intimate discomfort.

- 95% patient satisfaction backed by science.\*\*
- 85% improvement in overall intimate satisfaction.\*\*
- Comfortable treatment without downtime yields higher patient retention and conversion rates.
- Operator and consumable free therapy maximizes practice profitability.



**PATIENTS REMAIN  
FULLY CLOTHED**



**OPERATOR  
FREE\*\*\***



**NO CONSUMABLES**



**ADDITIONAL  
REVENUE**

\*High-Intensity Focused Electromagnetic

\*\*Data on file

\*\*\*Once the therapy is started, there is no need for additional operator activity.

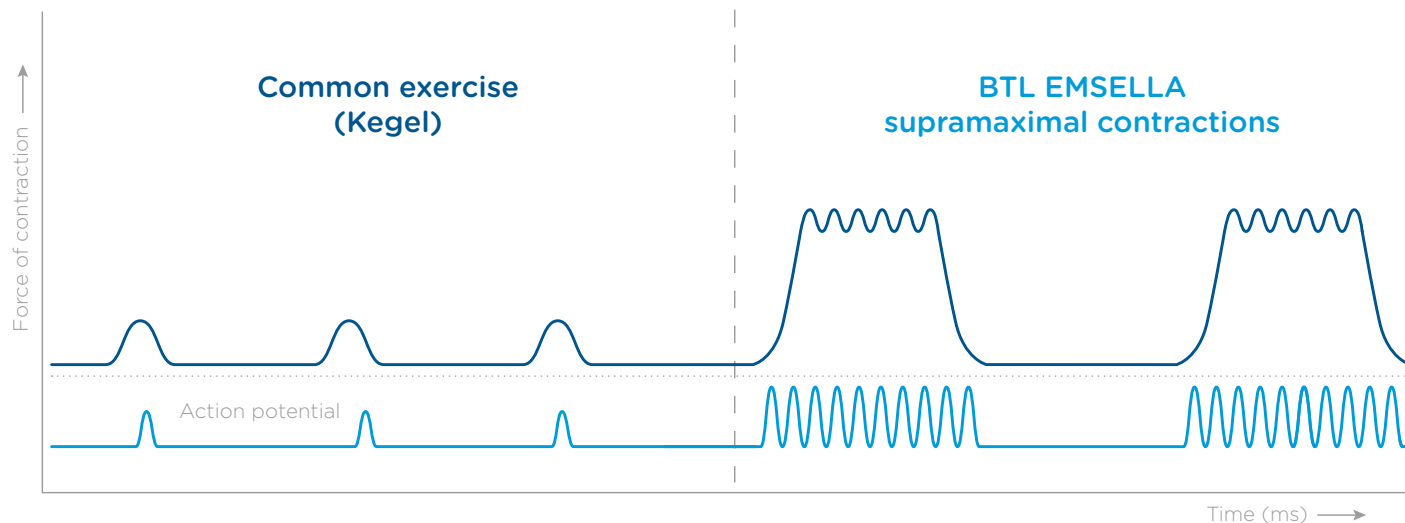


# FULLY FOCUSED ON PELVIC FLOOR

BTL EMSELLA utilizes **HIFEM** to cause **deep pelvic floor muscles stimulation and restoration of the neuromuscular control**.

Key effectiveness is based on **focused electromagnetic energy, in-depth penetration and stimulation of the entire pelvic floor area**.

A single BTL EMSELLA session brings **thousands of supramaximal pelvic floor muscle contractions**, which are extremely important in muscle re-education of **incontinent patients, women after childbirth and those with decreased intimate satisfaction**.

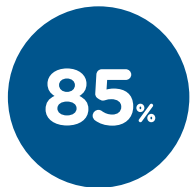


# THE RESULTS

Scientific research has shown that treated patients reported significant improvement in their quality of life.\*



**Incontinent patients** reported **significant improvement** in day-to-day life.\*



**Improvement** in overall **intimate satisfaction**.\*

\*Data on file.



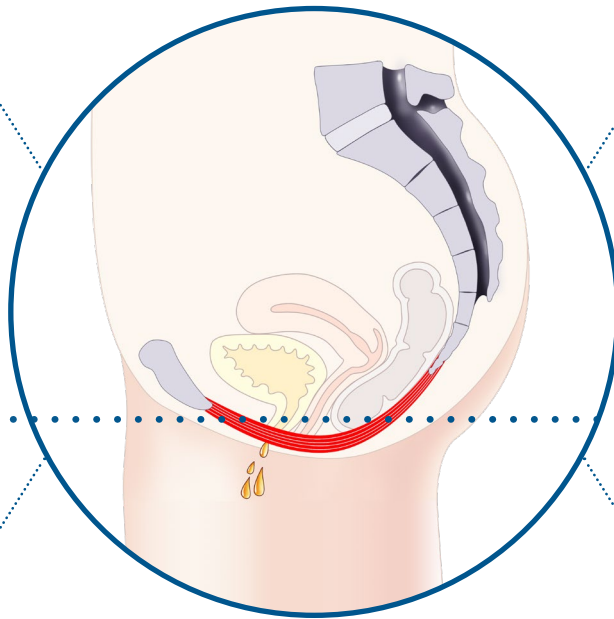
# BACKED BY SCIENCE

## BEFORE

Body aging, childbirth, and menopause can lead to incontinence and decreased intimate satisfaction.

Poor pelvic floor muscle awareness and ability to contract muscles

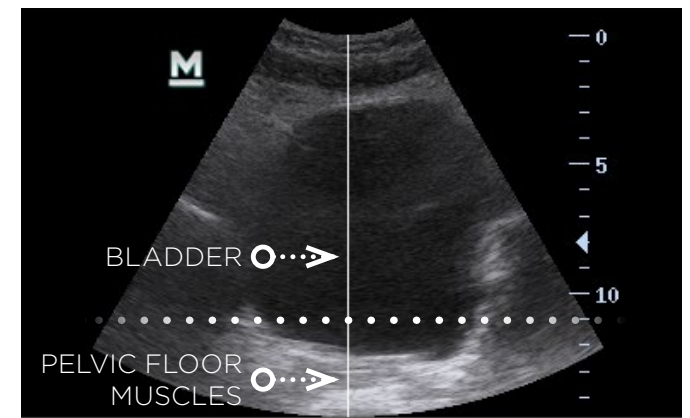
Loss of neuromuscular control



Uncontrolled urine leakage

Weak pelvic floor muscles

Relaxed & Loosened Pelvic Floor



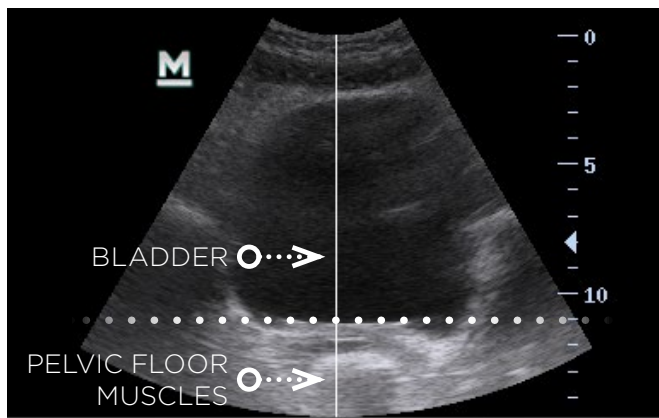


# PROVEN BY EVIDENCE

## AFTER

BTL EMSELLA allows for the treatment of the muscles and main components of connective tissue in the pelvic floor area.

Stimulated Pelvic Floor

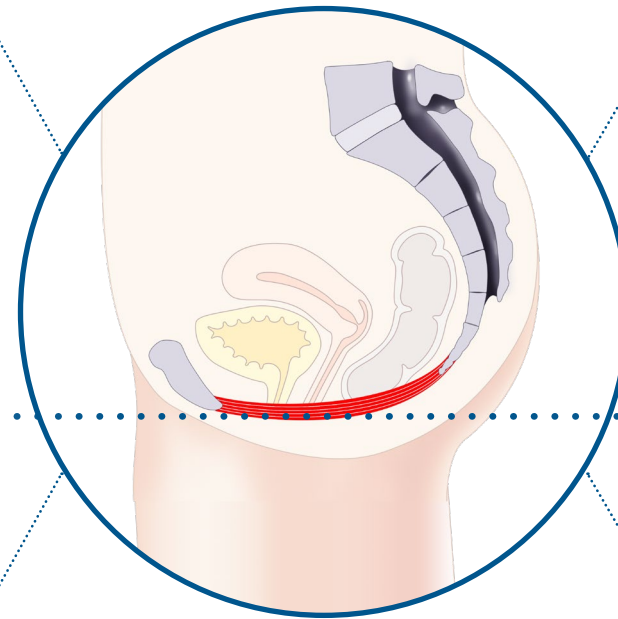


Improved awareness and ability to contract pelvic floor muscles

Restoration of neuromuscular control

Regained bladder control

Deep pelvic floor muscle stimulation and strengthening



# COMFORT COMES **FIRST**

**BTL EMSELLA** was designed to maximize operator and patient comfort.

## **VISUAL MONITORING**

aids operator therapy control.



## **ADVANCED POSITIONING SYSTEM**

ensures precise energy delivery to the pelvic floor.

## **COOL FLOW TECHNOLOGY™**

offers unlimited pelvic floor workouts thanks to a forced-air cooling system.



# A LIFE-CHANGING EXPERIENCE



NON-INVASIVE

*“ After 2 deliveries, I finally felt that my muscles are firmer and I can enjoy my intimate life again! ”*

Lesley



REMAIN FULLY CLOTHED

*“ I sat here in my blue jeans and just read a book, it's the easiest thing I have ever done here. ”*

Sarah



WALK-IN WALK-OUT PROCEDURE

*“ I did it and there is huge difference, I don't even have to cross my legs. It made like a phenomenal difference! ”*

Michelle



The names in the testimonials have been changed to protect the privacy of the patients.

# THEIR WORD MATTERS



"We place all our stress incontinence and overactive bladder patients on this chair. They are loving the 28-minute treatments. It is so easy sitting fully clothed on the chair, reading a magazine, and getting a full pelvic workout as if you had a private pelvic floor trainer beside you without the sweat!"

**RED ALINSOD, M.D.**

Alinsod Institute for Aesthetic  
Vulvovaginal Surgery  
Laguna Beach, CA



"I have never seen anything quite as innovative as the BTL EMSELLA for the treatment of incontinence. After treating and observing 20 different women with both urge and stress and mixed forms of incontinence I was pleasantly surprised and happy to see the relief my patients obtained from this therapy."

**JOSEPH BERENHOLTZ, M.D.**

Michigan Institute of OB/GYN  
Farmington Hills, MI



"Our results with Emsella have been extremely impressive. The technology allows for more comprehensive rehabilitation of the pelvic musculature than standard stimulation techniques and works the muscles in a supra-physiologic fashion. Based on our practice's and my colleagues' results, this has produced more rapid and significant improvement over comparative options."

**NATHAN GUERETTE, M.D.**

The Female Pelvic Medicine  
Institute of Virginia  
Richmond, VA



"The results have been really rewarding. There are many patients who really call this a life-changing experience. When we treat the patients with EMSELLA, whether we are doing a RF treatment in conjunction or laser treatment in conjunction, one of the things I am most impressed with as a provider is how much their lives are changed."

**JULENE B. SAMUELS, M.D.**

Julene B. Samuels, MD, FACS  
Louisville, KY



"Benefits we are beginning to see are that with stronger muscle tone in the pelvis, the sexual satisfaction in our patients is enhanced. Being that orgasmic response involves muscle contractility it follows that with increased strength and blood flow to the area there is improved sexual gratification."

**CAROLYN DELUCIA, M.D., FACOG**

Carolyn DeLucia, M.D., FACOG  
Ob/Gyn & Co-Founder V-Spot  
Medispa, New York, NY



"BTL EMSELLA is a great opportunity in terms of speed of efficacy and modesty because patients don't have to undress. The BTL EMSELLA can offer significant and tangible improvement in the patients' quality of life."

**TRACEY SIMS, M.D.**

The Medical Laser  
and Aesthetics Group  
Wirral, United Kingdom

# OVER 25 YEARS OF INNOVATION

